

At The Leading Edge of Protection

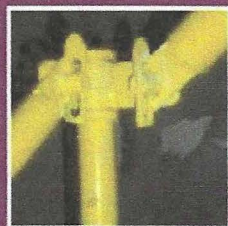
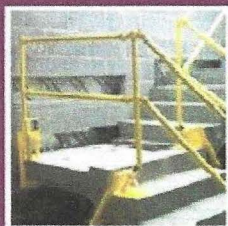


Stairsafety Concrete



Engineering
Services

Stairsafety Systems Concrete



Edge protection and stair handrail systems

Staircases present a dangerous potential for falls when working at height in the construction business. Stairs are often a well travelled passageway for workers and materials, requiring specifically designed safety systems aimed at fall prevention. MKE offers a British Standards compliant safety system incorporating stair edge protection and landing protection. Telescopic rails can be easily adjusted to fit stairways of any size or configuration in timber frame buildings and concrete buildings for reliability and safety.

The MK designed and patented Stairsafety System provides a unique temporary edge protection solution for use on all open stairwells and landings. A modular system of telescopic rails, multi-angle swivel pillars and newel fittings that can be used

Site Menu

[Home Page](#)

[About Us](#)

[Stairsafety Systems Wood](#)

[Stairsafety Systems Concrete](#)

[Stairwell Platform](#)

[Work At Height Mate](#)

[Trailersafety Systems](#)

[Contact Us](#)

Contact Us

MKE Services Limited

Brodie Lodge, 21 Brodrick Avenue
Gosport, Hampshire PO12 2EN

Tel: +44 (0) 239 228 7125

Email: info@mkeservices.com

[Click here to send us a message.](#)

PDF File Downloads

Click on any of the links below to view or download a PDF format brochure of our products.



on all kinds of staircases as well as concrete slab flooring and steel beam constructions. The MK Stairsafety System is simple to configure and quick to install with no specialist training required for installation.

No tools required for installation

Lightweight and robust design

Reconfigurable and reusable components

Suitable for use with virtually any wood or concrete stairs

Easily transportable from site to site

High visibility powder coating

Provision for kick-boards

Designed and tested to exceed BS EN 13374
(Temporary edge protection systems)

[Stairsafety Systems](#)

[Work At Height Mate](#)

[Trailersafety Systems](#)

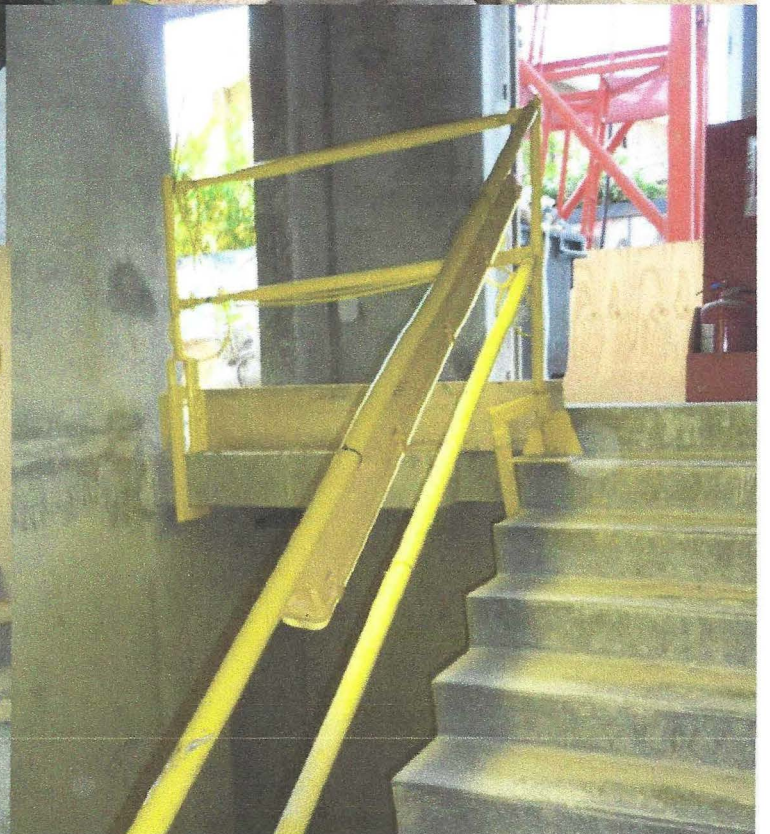
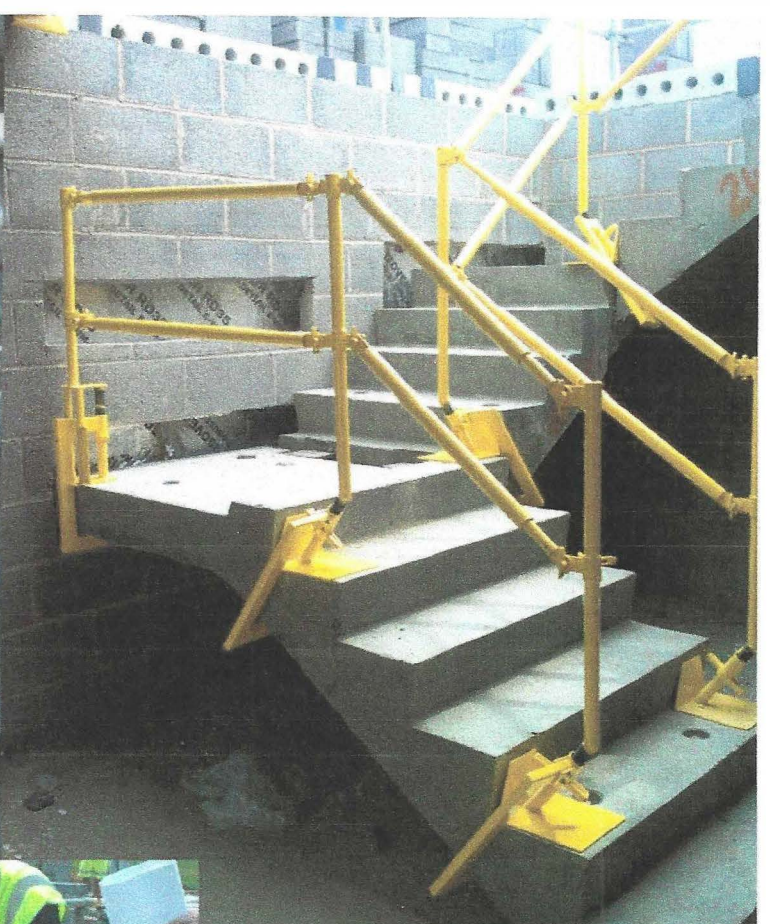
[Stairwell Platform](#)

Pertinent Information

Click on any of the links below for more information from Health and Safety Executive (HSE) and other related sources.

[Work at Height Regulations 2005](#)

[Falls from height in the workplace](#)



BEFORE STARTING PLEASE ENSURE THAT THE WORK AREA IS FREE FROM HAZARDS

REMOVE ALL LOOSE DEBRIS FROM SURFACES OF SLABS AND STAIRS PRIOR TO ASSEMBLY

STEP 1 :- ATTACH STAIR PILLARS



GAP WHEN
POSITIONING

POSITION PILLARS ACCORDING TO
RAIL LENGTH BEING USED (SEE
COMPONENT SCHEDULE)



TIGHTEN WING NUT BY HAND, THEN A
QUARTER TURN USING LUMP HAMMER
OR SIMILAR



NO GAP WHEN TIGHTENED

STEP 2 :- ATTACH RAILS



POSITION ANTI-LUCE BLADE
HORIZONTALLY AS SHOWN



INSERT RAIL END OVER
ANTI-LUCE BLADE



DEPLOY ANTI-LUCE BLADE INTO
VERTICAL/LOCKED POSITION

REPEAT THIS PROCEDURE UNTIL ALL
EDGES ARE PROTECTED



BEFORE STARTING PLEASE ENSURE THAT THE WORK AREA IS FREE FROM HAZARDS

REMOVE ALL LOOSE DEBRIS FROM SURFACES OF SLABS AND STAIRS PRIOR TO ASSEMBLY

STEP 1 :- ATTACH SLAB PILLARS



GAP WHEN POSITIONING

POSITION PILLARS ACCORDING TO RAIL LENGTH BEING USED (SEE COMPONENT SCHEDULE)



TIGHTEN WING NUT BY HAND, THEN A QUARTER TURN USING LUMP HAMMER OR SIMILAR



NO GAP WHEN TIGHTENED

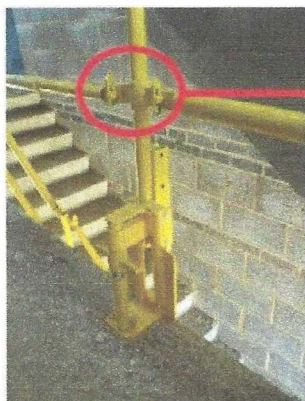
STEP 2 :- ATTACH RAILS



POSITION ANTI-LUCE BLADE
HORIZONTALLY AS SHOWN



INSERT RAIL END OVER
ANTI-LUCE BLADE



DEPLOY ANTI-LUCE BLADE INTO
VERTICAL/LOCKED POSITION

REPEAT THIS PROCEDURE UNTIL ALL
EDGES ARE PROTECTED



ATTACH TOE/KICK BOARDS TO TABS



Engineering
Services

MK Engineering Services Limited
Brodie Lodge, Brodrick Avenue,
Gosport, Hants. PO12 2EN

Mob: 0785 007 8819

Tel: 0239 228 7125



NEWEL CASING

LH



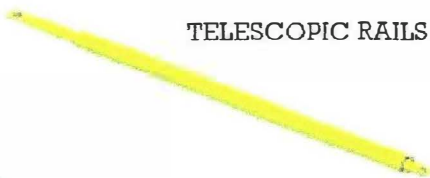
RH



SCREW CLEATS



ANY ANGLE PILLAR



TELESCOPIC RAILS 0.25 - 0.5m
0.5 - 0.7m
0.7 - 1.0m
1.0 - 1.5m
1.5 - 2.5m
2.5 - 3.5m



CHAIN 0.15 - 0.5m



CONCRETE STAIR PILLAR



CONCRETE SLAB PILLAR

Web: www.mkeservices.com

Email: info@mkeservices.com